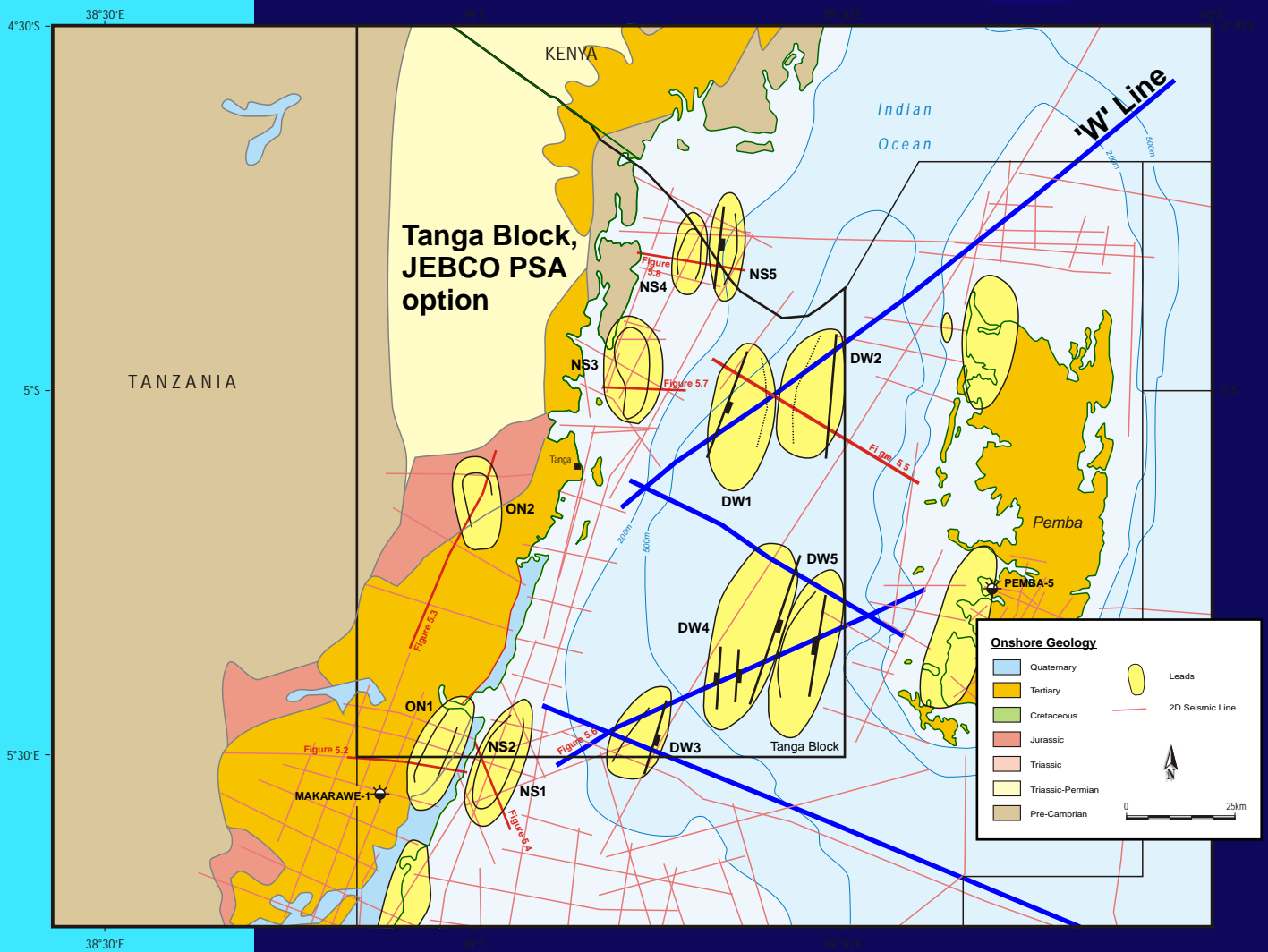


NORTH-EASTERN TANZANIA TANGA BLOCK SEISMIC REPROCESSING

6,882 sq km
TCF/BBL potential



300km Reprocessed seismic available now

Detailed geological and geochemical review of NE Tanzania available now

Gravity and basin modeling report for the entire East Africa margin



London % Houston % Rio % Moscow



NORTH-EASTERN TANZANIA TANGA BLOCK SEISMIC REPROCESSING

NE Tanzania - newly reprocessed seismic:

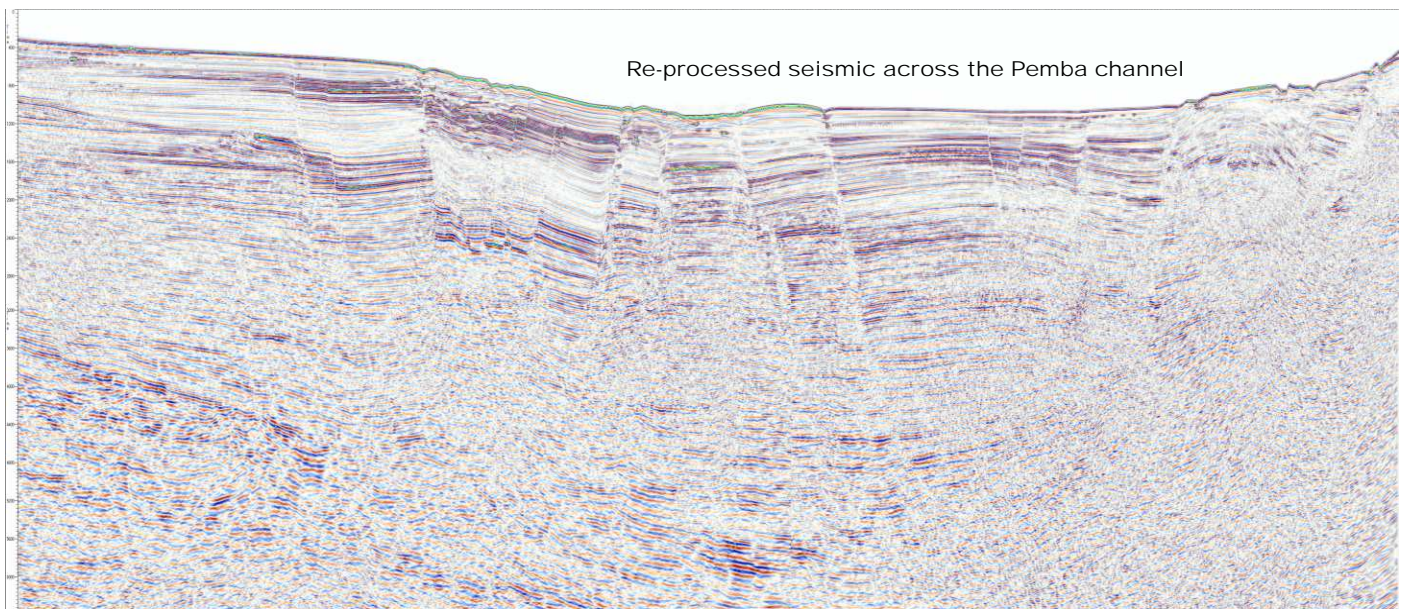
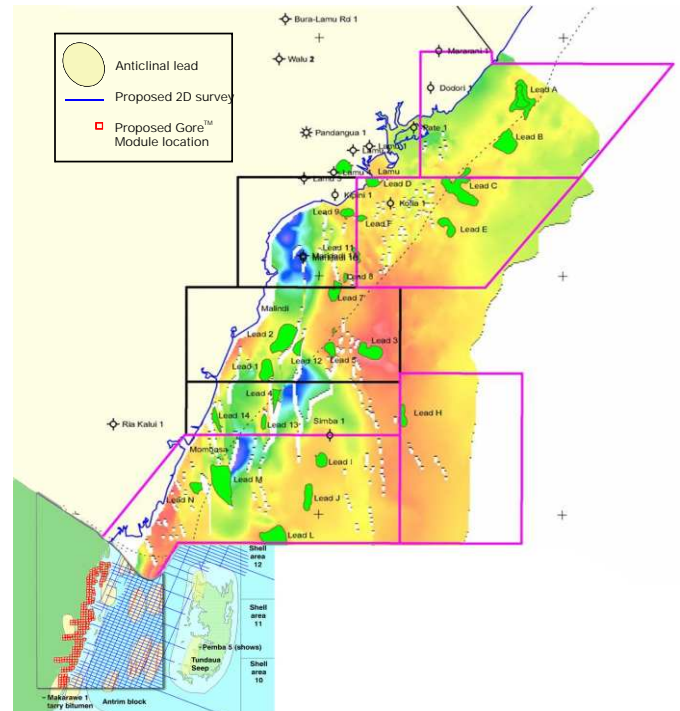
JEBCO Seismic have recently completed the transcription and reprocessing of 300km of 2D data collected in 1986 by the MV Bernier over the Pemba Simba High, the Pemba Channel and the Pemba Zanzibar Straights.

Originally processed in 1987 the data is valuable as there is little other data in the region, particularly digital data and it has the longest record lengths for any data acquired in North East Tanzania.

Reprocessing has revealed the presence of flat spots, bright events, large rollover features and a series of tilted fault blocks.

The data forms a valuable tie to the recently surveyed blocks to the North in Kenya, to the leads and features seen in the Pemba Channel and the deepwater seismic in the Indian Ocean to the south and west.

The data is available for license from JEBCO Seismic. Please contact Chris Matchette-Downes e.mail cjmd@jebcoseis.com



Re-processed seismic across the Pemba channel

JEBCO Seismic (UK) Ltd
Capitol House
Suite B, Second Floor
2 Church Street
Epsom, Surrey, KT17 4NY
t. 44 (0) 845 458 5171
f. 44 (0) 1372 729696
e. cjmd@jebcoseis.com
www.jebcoseis.com

JEBCO Seismic LP
10260 Westheimer
Suite 400
Houston
Texas 77042 USA
t. +1 713 975 0202
f. +1 713 975 9293
e. rdammer@jebcoseis.com

Tanzania Petroleum Development Corporation
37/38 Ali Hassani Mwinyi Road
Dar Es Salaam
Tanzania
Tel: +255 22 2118535
Fax: +255 222129663
www.tpdz-tz.com
e.mail halfan@tpdc-tz.com



www.jebcoseis.com