

# JEBCO Seismic

## Scotian Shelf East / Banquereau Bank Survey & Gulf of Maine Survey

Canada Nova Scotia

Offshore Petroleum Board

Call for Bids 2011-2012, NS11-1

[http://www.cnsopb.ns.ca/call\\_for\\_bids/11\\_1/cnsopb/index.html](http://www.cnsopb.ns.ca/call_for_bids/11_1/cnsopb/index.html)

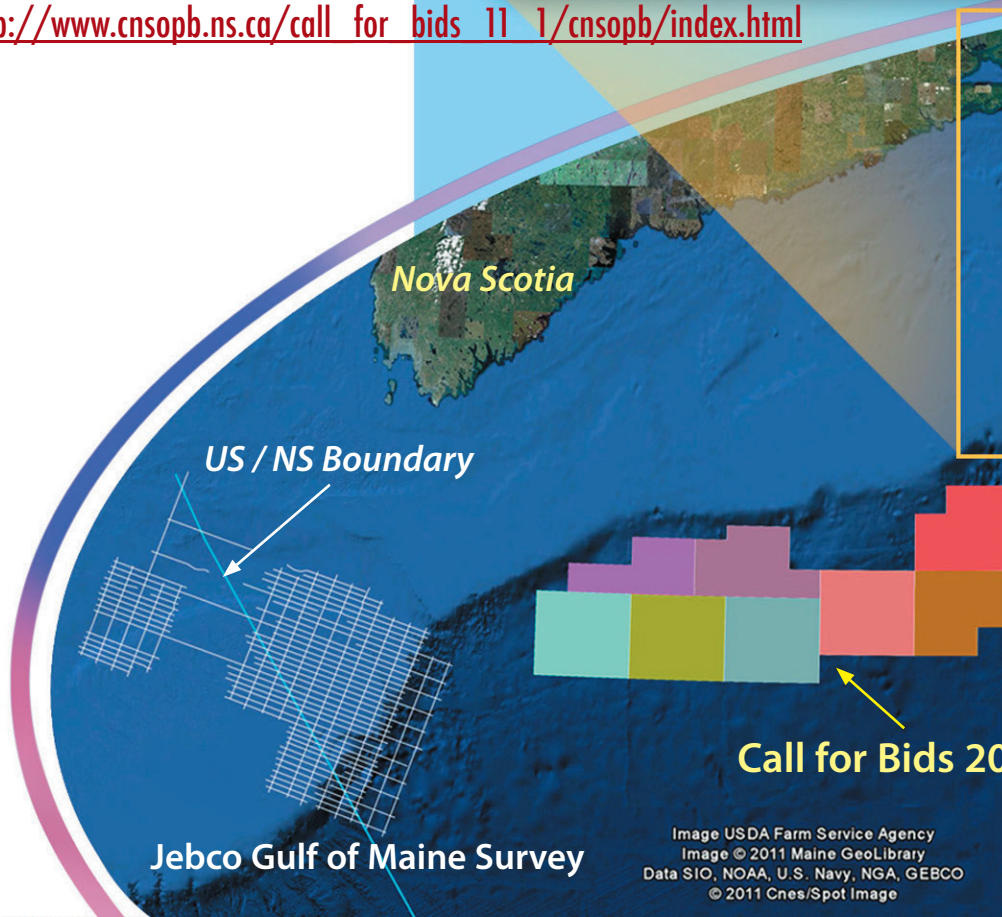
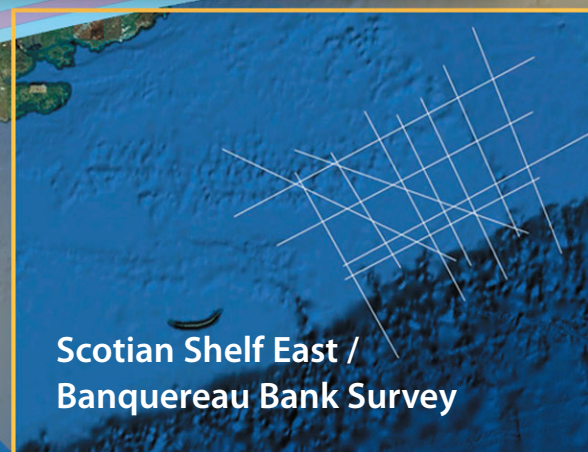
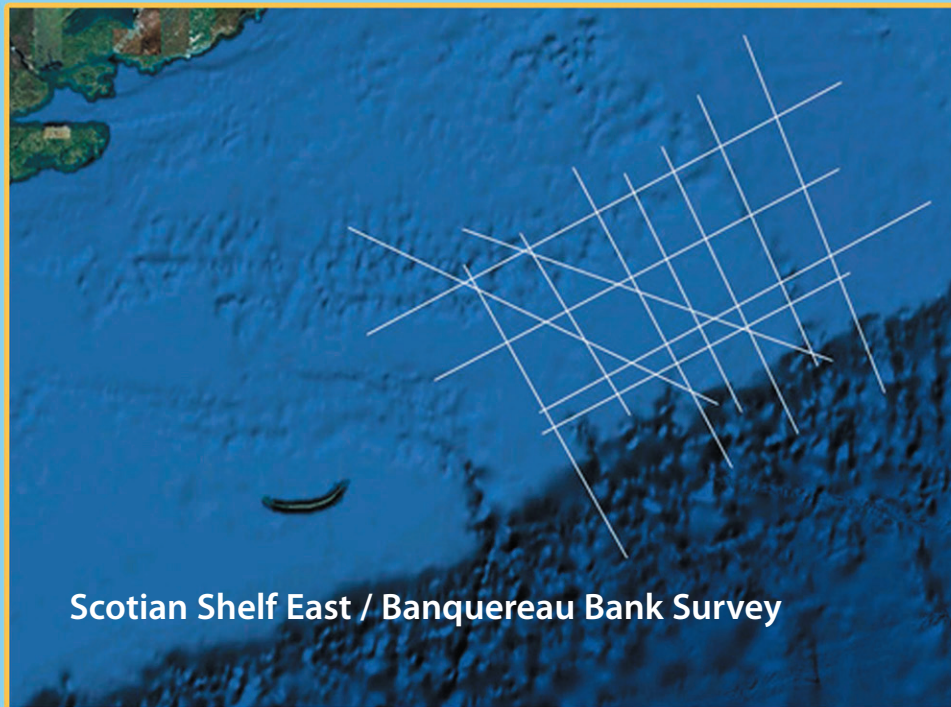


Image USDA Farm Service Agency  
Image © 2011 Maine GeoLibrary  
Data SIO, NOAA, U.S. Navy, NGA, GEBCO  
© 2011 Cnes/Spot Image





# JEBCO Seismic

## Scotian Shelf East / Banquereau Bank Survey

### Acquisition Parameters

Survey Area:	2,200 km / 1,367 miles
Acquired:	1998
Source Size:	2,250 cubic inch
Streamer Length:	4,800m
Record Length:	6 or 7 sec
SP Interval:	18.75m
Group Interval:	12.5m
Number of Channels:	384
Fold:	128

## Gulf of Maine Survey

### Acquisition Parameters

Survey Area:	6,870km / 4,270 miles
Acquired:	1984 Reprocessed 2010
Source Size:	4,000 cubic inch
Streamer Length:	3,000m
Record Length:	7 sec
SP Interval:	25m
Group Interval:	25m
Number of Channels:	120
Fold:	60

---

For more information, contact JEBCO Seismic (Canada) Company:

800, 350 – 7th Ave. SW.  
Calgary, Alberta  
T2P 3N9

**Tel: (403) 705-1925**

Email Andy Vernon at:  
[avernon@jebcoseis.com](mailto:avernon@jebcoseis.com)

2450 Fondren Road, Ste. 112  
Houston, Texas  
77063

**Tel: (713) 975-0202**

Email Wayne Turner at:  
[wayne@netropolis.net](mailto:wayne@netropolis.net)